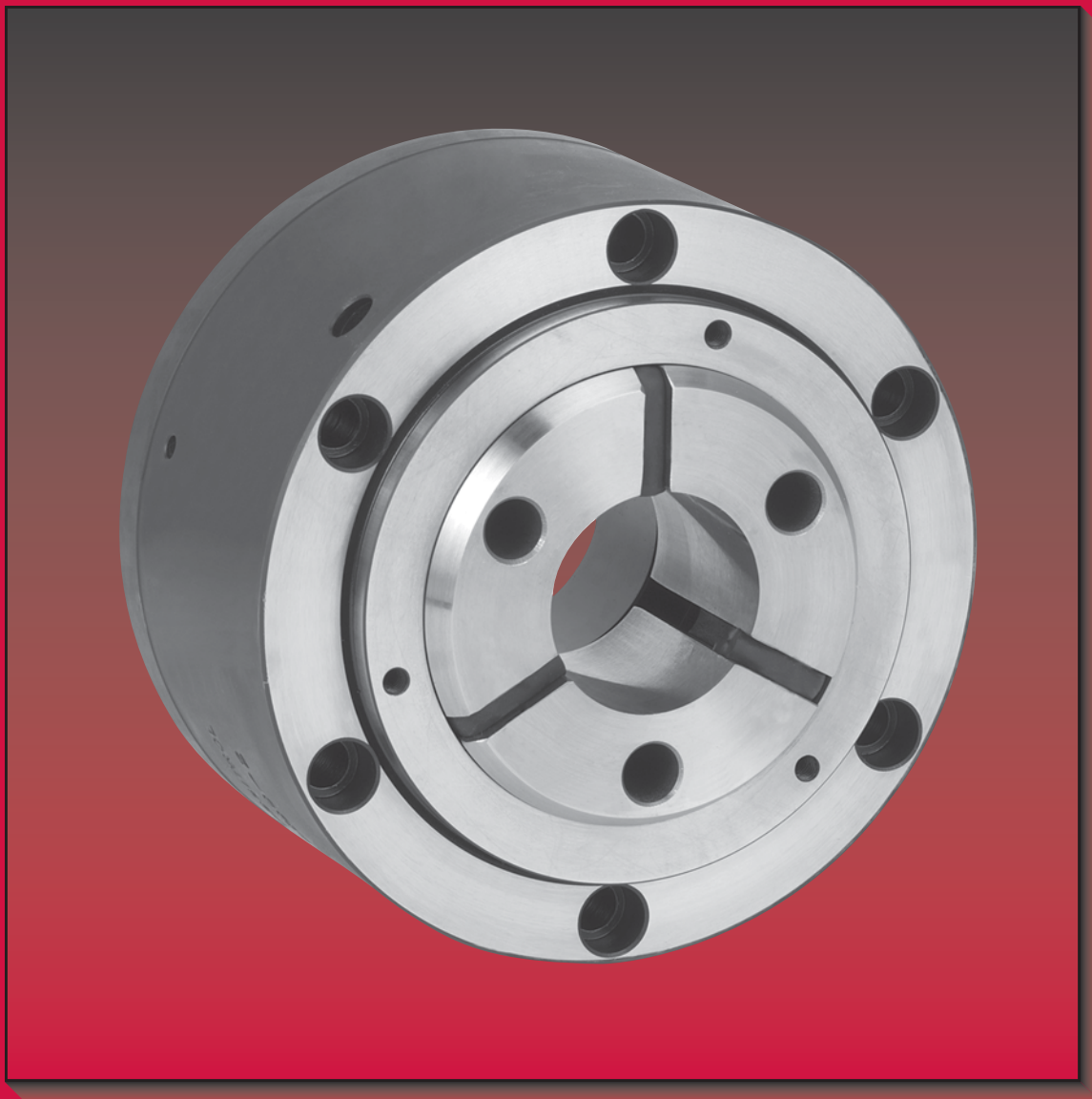


POSITROL WORKHOLDING



Cartridge Chucks

POSITROL WORKHOLDING

Higher Productivity with POSITROL'S Cartridge Chucks

Higher Quality Parts

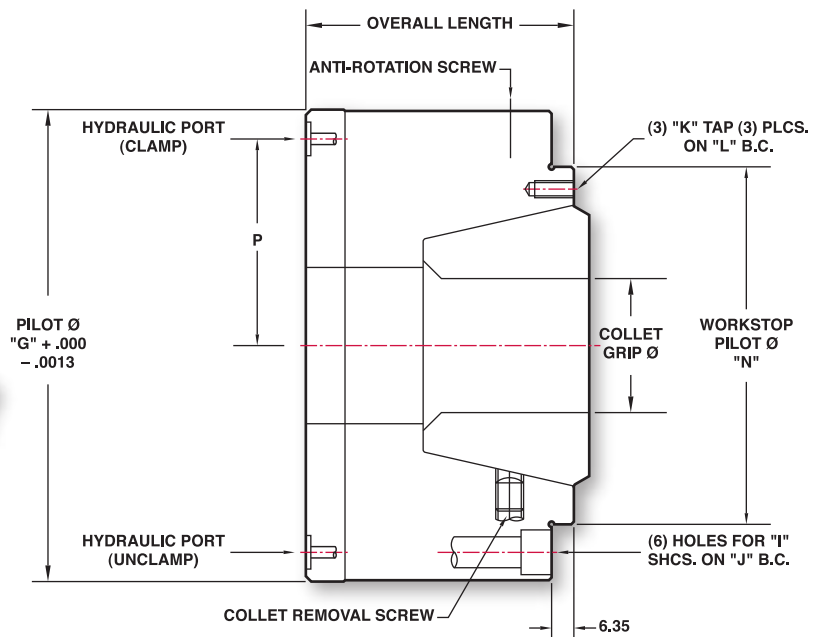
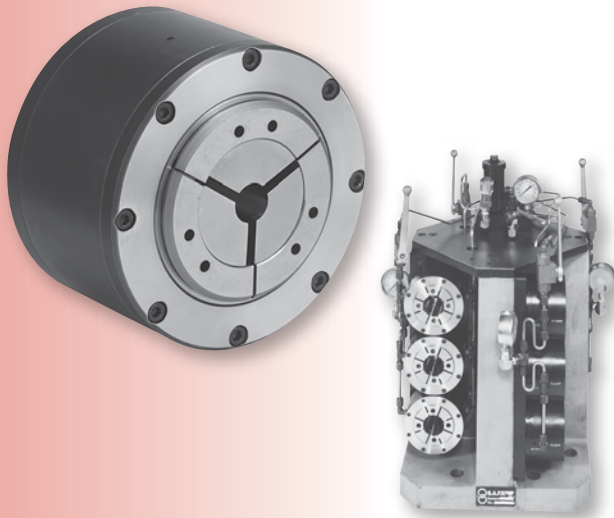
- Clamping and locating on the outside diameter allows better concentricity and true position
- Pullback feature provides positive length control, parallelism, and perpendicularity
- Chuck components are hardened and ground for long term repeatability
- Air sensing capable to indicate the part is seated correctly
- True parallel gripping compensates for part size variations

More Throughput and Cost Savings

- Rigid clamping allows increased feed rates and tool life
- Compact design allows for more parts on the fixture

Simple Design

- Integral actuator eliminates the need for costly cylinder adaptation
- Workstop location provided on top or inside the chuck
- Internal porting eliminates tubing chip traps
- Standard and special chucks offered



| MODEL NUMBER | CLAMP RANGE | OPEN & CLOSE | OAL | PILOT Ø | MOUNTING PATTERN | WORKSHOP TAP PATTERN | PORT | WORKSTOP PILOT | MAX CLAMP FORCE |
|--------------|-------------|--------------|-----|---------|--------------------------------|--------------------------------|-------|----------------|--------------------------------|
| | | | | G | I & J | K & L | P | N | |
| CCFSC - 1 | 8-42Ø mm | 0.76 | 76 | 134 | 8 mm (6) PLCS. ON 119.86Ø B.C. | 5 mm (3) PLCS. ON 102.39Ø B.C. | 58.75 | 119.05 | 35 kN @ 196 kg/cm ² |
| CCFSC - 2 | 8-65Ø mm | 0.76 | 86 | 160 | 8 mm (6) PLCS. ON 142.88Ø B.C. | 5 mm (3) PLCS. ON 134.92Ø B.C. | 68.66 | 146.05 | 44 kN @ 211 kg/cm ² |

*ALL DIMENSIONS & SPECIFICATIONS ARE SUBJECT TO CHANGE

CALL US FOR APPLICATION ASSISTANCE

POSITROL, INC. • 3890 VIRGINIA AVE. • CINCINNATI, OHIO 45227
PHONE: 513-272-0500 • FAX: 513-272-0503 • email: sales@positrol.com

www.positrol.com

TO LEARN MORE
ABOUT POSITROL
CARTRIDGE CHUCKS
CALL 513-272-0500